



CS-1815

The Productivity Star


Kyocera Technology

CS-1815

| The Small Workgroup Solution

CS-1815 Highlights

- 18 Pages per Minute
- Standard Network Print
- Standard Color Scan to E-Mail
- Scan Once Print Many, Electronic Sort
- 250 Sheet Paper Drawer, 50 Sheet MPT
- Optional 50 Sheet Document Processor
- Monocomponent Technology
- Long Life Components
- Compact Design



Today's small workgroups need a multi-functional, networked document solution that can handle the demands of everyday printing and copying. Combining features, performance, and long life components, the user-friendly CS-1815 delivers.



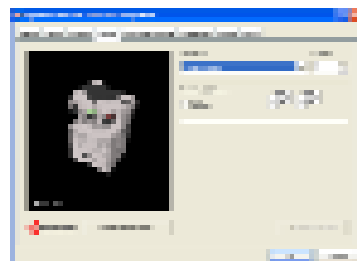
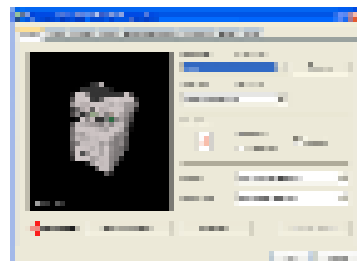
NETWORK/PRINT

Superior output backed by tools to control the process

Print speeds of up to 18 high-quality letter size sheets per minute make the CS-1815 a solid performer. With full-featured multi-functional capabilities, it easily **connects to virtually any network**. Both PC and MAC compatible, the CS-1815 offers a standard Network Interface as well as a standard High Speed USB 2.0 port for super fast data transfer.

Supporting the CS-1815 are Kyocera-designed intelligent device and network management solutions, which offer an extensive array of document and device management capabilities. The **advanced KX Driver**, common to all Copystar Multi-functionals, ensures consistency, compatibility and integration, while allowing users and administrators to customize print settings and select output features from the desktop.

Comprehensive networking tools are provided at no cost, enabling administrators to configure and manage the CS-1815. The web-based **Kyocera Command Center** interface facilitates the setting of Network parameters, as well as printing and scanning defaults by simply entering the device IP address. KM-NET Viewer and KM-NET for Client allow Network Administrators to view and manage output devices as needed.



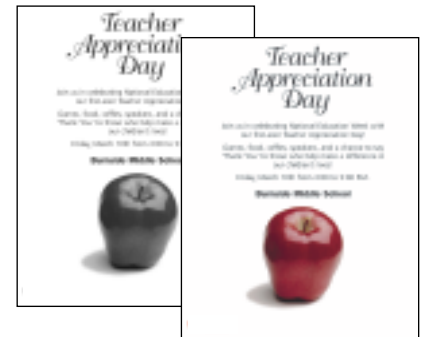
UNIVERSAL PRINT DRIVER
The user-friendly KX Driver features a common interface and allows users and administrators complete control of the output process.

COLOR SCAN to E-MAIL

Enhanced productivity and functionality

The CS-1815's exceptional scanning abilities enable hardcopy documents to be converted into a **digital format for sharing or archiving**. Users can scan up to 18 sheets per minute with resolutions up to 600 dpi, and send documents in PDF, TIFF and JPEG formats. Not only is the CS-1815 SMTP-compliant, it also offers the convenience of eight One-Touch destination keys to quickly and easily route scanned images.

The versatile CS-1815 also scans pages as **Color or Monochrome images**, adding a whole new dimension to any business document. By combining the CS-1815's Color Scanning capabilities with a low cost Color Laser Printer, the CS-1815 offers an excellent alternative to a higher cost color system.



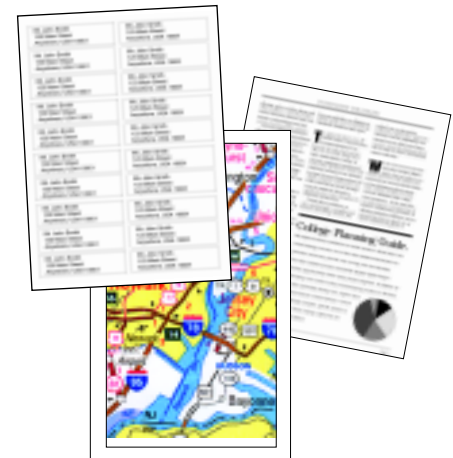
SCANNING VERSATILITY

The CS-1815 offers standard Scan to E-Mail functionality. Pages can be scanned in Color or Monochrome, as PDF, TIFF or JPG files.

COPY

Exceptional image quality combines with Scan Once Print Many technology

With output speeds of up to 18 pages per minute, and a maximum monthly volume of 15,000 pages, the CS-1815 is a powerful business tool for the Small Workgroup. The CS-1815 comes equipped with a standard 96MB of RAM, which can be upgraded to 320MB. The optional 50 sheet Document Processor allows clients to utilize important features like **Scan Once Print Many and Electronic Sort**. The CS-1815 can accommodate up to 550 sheets of paper on-line, both Letter and Legal size, so productivity is always high.



OUTPUT VERSATILITY

The CS-1815 offers crisp, clear resolution on labels, legal size paper, transparencies and more.

Today's business environment demands exceptional Document Imaging Solutions that can offer affordability and versatility without compromising quality. The CS-1815 rises to the challenge by providing small workgroups an intelligent choice to output and deliver the business-critical documents that matter most. Backed by Kyocera, one of the most respected and recognized names in the industry, the CS-1815 is a smart solution that makes good business sense.

CS-1815 Specifications

BASIC SPECIFICATIONS:

Configuration:	Desktop Digital Multifunctional with Standard 250 Sheet Paper Drawer Plus 50 Sheet Multi-Purpose Tray, 96MB RAM Memory, Scan Once Print Many and Electronic Sort. Standard Printing and Color Scan to E-Mail. Standard Network Interface. Optional 50 Sheet Document Processor and Paper Handling.
Resolution:	600 x 600 DPI/256 Levels; Fast 1200 DPI (1800 x 600), 2400 x 600 DPI w/KIR Print Resolution
Copier Memory:	Standard 96MB RAM upgradeable to 320MB via 100 Pin DIMMS (1 Slot).
Magnification:	Full Size, Auto Magnification, Plus 50-200% Zoom in 1% Increments
Electrical Requirements:	120V, 60Hz, 7.8A
Dimensions:	(w/o DP) 19.5"W x 16.6"D x 15.2"H (w/ DP) 19.5"W x 16.6"D x 17.9"H
Weight:	32.0 lbs
Max Monthly Volume:	15,000 Pages per Month

OUTPUT SPEEDS:

Warm-Up Time:	30 Seconds
First Print Out:	8 Seconds
First Copy Out:	10 Seconds
Pages Per Minute:	18 Letter, 15 Legal

PAPER SUPPLY:

Standard Paper Sources:	250 Sheet Drawer, 50 Sheet MPT
Drawer Paper Size:	8.5" x 11", 8.5" x 14"
MPT Paper Size:	5.5" x 8.5" – 8.5" x 14"
Std / Max Paper Capacity:	300 / 550
Paper Weight:	16-28 lb bond via Paper Drawers, 16 lb Bond -90 lb Index via MPT
Input Materials:	Bond Paper, Recycled Paper, Transparencies, Envelopes

COPY FUNCTIONS:

Imaging Modes:	Auto, Text, Photo, Text / Photo, Manual, ECO
Continuous Copy:	Up to 999, Auto Reset to 1
Additional Features:	Auto Magnification and Paper Select, Scan Once Print Many, Electronic Sort, 2 in 1, 4 in 1, ECO Mode

PAPER HANDLING OPTIONS:

DOCUMENT PROCESSOR: DP-100

Type:	Automatic Document Feeder
Acceptable Originals:	5.5" x 8.5" – 8.5" x 14"
Capacity:	50 Sheet ADF
Speed:	18 Originals per Minute
Paper Weight:	13– 32 lb Bond
Dimensions/Weight:	17.9"W x 13"D x 3.7"H/ 5.1 lbs.

PAPER DRAWERS: PF-17

Paper Capacity:	250 Sheets
Paper Weight:	16 - 28 lb Bond
Paper Size:	8.5" x 11", 8.5" x 14"
Dimensions / Weight:	14.9"W x 14.7"D x 3.1"H / 4.8 lbs

ADDITIONAL OPTIONS:

System Memory:	64, 128, 256 MB DIMMS
-----------------------	-----------------------

CONNECTIVITY:

STANDARD PRINT/SCAN:

PRINT:	
Controller:	Embedded PowerPC750/ 300 MHz Controller
Supported PDL/Emulations:	PRESCRIBE, PCL6 (PCL XL, PCL 5e), KPDL3 (PS3), Diablo 630, IBM ProPrinter X24, Epson LQ850, Line Printer
Fonts:	80 Outline Fonts for PCL XL/5e and KPDL, 1 Bitmap Font
Windows™ OS Compatibility:	Windows™ 95/98/Me/NT4.x/2000/XP/2003
MAC OS Compatibility:	OS 8.x/9.x/10.x
UNIX OS Compatibility:	Sun OS 4.1.x; Solaris 2.x; AIX, HP-UX (LPR)
Connectivity / Interface:	Standard 10/100BaseTX, Parallel IEEE1284, High Speed USB 2.0
Supported Protocols:	TCP/IP, AppleTalk, NetBEUI
Driver:	KX Driver for Windows™, PPD for Mac, PPD for Linux/UNIX, Certified Uni Driver
Utilities:	KM-NET Viewer, KM-NET Client, PDF Direct Print, Quick Setup Tool, Kyocera Command Center, PRESCRIBE Utilities

COLOR SCAN TO E-MAIL

Resolution:	200, 300, 400, 600 DPI
Scan Speed:	Up to 18 Sheets Per Minute (Mono) Up to 5 Sheets Per Minute (Color)
File Formats:	Mono: PDF, TIFF Color: PDF, JPEG
Connectivity:	Standard 10/100BaseTX
Supported Protocols:	TCP/IP
Scanning Features:	Scan to E-Mail (minimum software requirements apply)
Additional Features:	8 One-Touch Destinations, Scan Color Select

— Specifications and design are subject to change without notice.
For the latest on connectivity visit www.copystar.com.
All trademarks and registered trademarks are the property of their respective manufacturers.

Kyocera Mita America, Inc. Headquarters:
225 Sand Road, PO Box 40008, Fairfield, NJ 07004-0008, USA
© 2004 Kyocera Mita America, Inc.
Available from Printers, Computers & Lans 800.473.7909 www.PCandL.com

